

# LUMBERTON, NC

## LUMBERTON INDUSTRIAL SITE

## Prime Industrial Site for Sale

### AVAILABILITY & PRICE

**Available Acreage:** 95 acres  
**Sales Price:** \$25,000 per acre

### GENERAL INFORMATION

**Address:** Intersection of I-95 and I-74  
(34.59438, -79.09862)  
**County:** Robeson  
**In City Limits:** Yes  
**Industrial/Business Park:** Industrial Park  
**Zoning:** Heavy Industrial

### SITE ACCESS

**Rail Access:** N/A

#### Access Roads

**Service Road:** U.S. 74 Alt E, Emery Road, Elway Way  
**Highway:** U.S. 74; Distance: 0.01 miles  
**Interstate:** I-74, I-95; Distance: 0.1 miles

#### Closest Air Transportation or Port

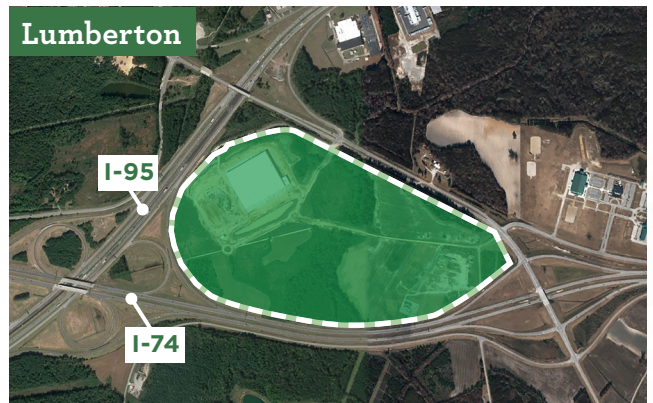
**Commercial:** Raleigh-Durham International (RDU) /  
Distance: 109 miles  
**Local:** Lumberton Regional Airport /  
Distance: <2 miles, 5 minutes  
**Closest Port:** Wilmington, N.C. / Distance: 80 miles

#### Closest Higher Education

**Community College:**  
Robeson Community College / Distance: 2 miles  
**4-Year College or University (within 50 mi):**  
University of North Carolina at Pembroke / Distance: 13 miles

### UTILITIES

**Electricity Service Provider:** City of Lumberton  
**Distance to Closest Substation (mi):** On-site  
**Natural Gas Service Provider:** Piedmont Natural Gas, On-site  
**Telecommunications Service Provider:** AT&T, On-site  
**Water Service Provider:** City of Lumberton  
**Waste Water Service Provider:** City of Lumberton



### Questions?

**BRANDON LOVE**  
Deputy City Manager, City of Lumberton  
[blove@ci.lumberton.nc.us](mailto:blove@ci.lumberton.nc.us)

**ELECTRICITIES**  
Economic Development Team  
[sites@electricities.org](mailto:sites@electricities.org)

### WHAT ARE Smart Sites?



**SHOVEL-READY** for development  
**ON-SITE** municipal electric service  
**WATER & SEWER** within 500 feet  
**WITHIN 5 MILES** of Interstate or  
Interstate-quality highway  
**REVIEWED AND QUALIFIED**  
by consultants and engineers

*All information is believed to be accurate, but is not guaranteed. Prices and available acreage subject to change without notice. Contact an Economic Development representative for complete details.*